

BALTINA

www.baltina.com.pl
info@baltina.com.pl

Elektrozawory wysokociśnieniowe bezpośredniego działania

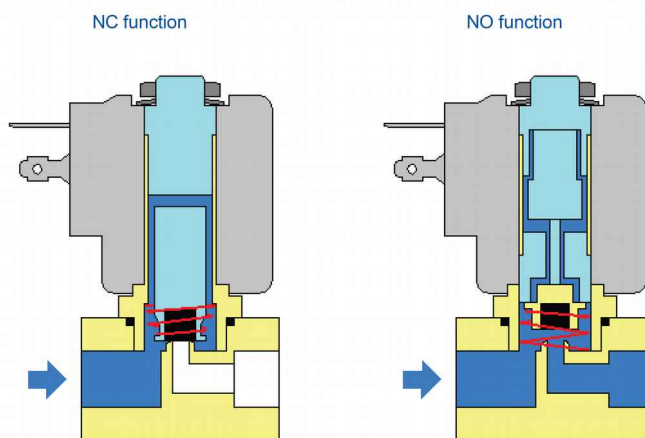
Zakres ciśnień 0 – 500bar
NC – normalnie zamknięte
NO – normalnie otwarte

80-314 GDAŃSK
Grunwaldzka 303

tel. +48 58 520 81 62
fax +48 58 765 11 21

TECHNICAL DATA:

- **Body:** Brass or INOX (AISI 303)
- **Internal parts:** INOX (AISI 303, AISI 430F)
- **Seals:** PA (polyamide), PTFE, PU (polyurethane), PEEK
- **Fluid temperature:** -10°C to +100°C (PTFE); +90°C (PA); +70°C (PU)
- **Ambient temperature:** max +55°C
- **Viscosity:** max 21 mm²/s
- **Response time:** opening 0.1 - 1 s; closing 0.5 - 5 s
- **Voltage:** 230, 115, 48, 24 V AC; 24, 12 V DC
- **Duty cycle:** continuous (ED100%)
- **Cycling rate:** 10 - 100 cpm
- **Electrical protection:** IP65 (with plug to ISO 4400)



CHARACTERISTICS OF SEALING MATERIALS:

- PEEK - excellent hardness and wear resistance, large number of cycles, imperfect sealing at lower pressure is possible
- PTFE - very good hardness and wear resistance, good sealing properties, good price/performance ratio
- PU - excellent sealing properties, not suitable for high cycling rate, not suitable for liquids
- FPM - elastomer for use at medium pressure when perfect sealing is required

BALTINA

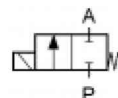
www.baltina.com.pl
info@baltina.com.pl

Elektrozawory wysokociśnieniowe bezpośredniego działania

Zakres ciśnień 0 – 500bar
 NC – normalnie zamknięte
 NO – normalnie otwarte

80-314 GDAŃSK
Grunwaldzka 303
 tel. +48 58 520 81 62
 fax +48 58 765 11 21

Closed when de-energised (NC)



Ports	Orifice size [mm]	Flow coefficient Kv [l/min] (water at 1 bar)	Differential pressure [bar]		Material		Mass [kg]	Coil type	Model	Voltage	Power [W]
			min	max	body	seal					
G1/4	0.9	0.3	0	400	INOX	PEEK	0.52	TM35	XD2N	230 V AC	8
						PU	0.52			230 V AC	8
	1	0.3	0	500	INOX	PEEK	0.52	TM35	XD2N	230 V AC	8
						PU	0.52			230 V AC	16
				350	INOX	PEEK	0.52	TM35	D22N	24 V AC	16
						PU	0.52			230 V AC	16
				250	INOX	PTFE	0.52	TM35	D22N	230 V AC	16
						Ms	PTFE			0.52	12 V DC
	1.2	0.46	0	250	INOX	PU	0.52	TM35	D22N	230 V AC	14
						PTFE	0.52			230 V AC	16
				200	Ms	PTFE	0.52	TM35	D22	24 V DC	18
						D220	12 V DC		18		
				150	INOX	PTFE	0.52	TM35	D221N	230 V AC	16
									D221N	24 V AC	16
									D220N	24 V DC	18
									Ms	PTFE	0.52
	1.4	0.7	0	200	INOX	PU	0.52	TM35	D22N	230 V AC	16
						Ms	PTFE			0.52	D221
2	1.5	0	150	INOX	PU	0.52	TM35	D22N	230 V AC	16	
					D220	24 V DC			18		
2.3	1.9	0	100	Brass	PU	0.52	TM35	D22	230 V AC	16	
NPT 1/4	0.9	0.3	0	400	INOX	PEEK	0.52	TM35	XD2N	115 V AC	16
	1	0.3	0	250	INOX	PTFE	0.52	TM35	D22N	115 V AC	16
	1.2	0.46	0	250	INOX	PTFE	0.52	TM35	D22N	24 V DC	18

BALTINA

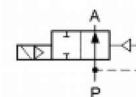
www.baltina.com.pl
info@baltina.com.pl

Elektrozawory wysokociśnieniowe bezpośredniego działania

Zakres ciśnień 0 – 500bar
 NC – normalnie zamknięte
 NO – normalnie otwarte

80-314 GDAŃSK
Grunwaldzka 303
 tel. +48 58 520 81 62
 fax +48 58 765 11 21

Opened when de-energised (NO)



Ports	Orifice size [mm]	Flow coefficient Kv [l/min] (water at 1 bar)	Differential pressure [bar]		Material		Mass [kg]	Coil type	Model	Voltage	Power [W]
			min	max	body	seal					
G1/4	0.5	0.15	0	350	INOX	PEEK	0.52	TM35	D22NNO	230 V AC	16
										24 V AC	8
	0.9	0.3	0	250	INOX	PEEK	0.52	TM35	D22NNO	230 V AC	16
										24 V AC	16
										24 V DC	16

Overall dimension

