






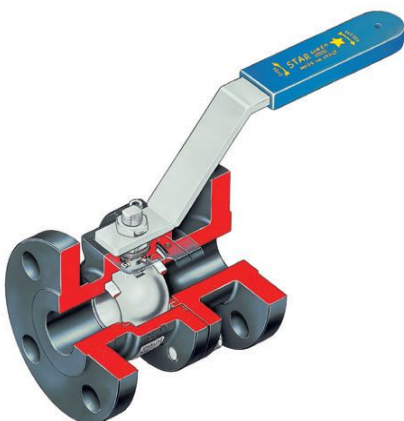
ZAWORY KULOWE KOŁNIERZOWE

produkt w całości europejski



<p>PED 97/23 EC</p>  <p>0038</p> <p>Certificate N°: RPS 0160304/01</p>	<p>ATEX 94/9 CE</p>  <p>Tech. File N° ST01 ATEX</p>
---	--

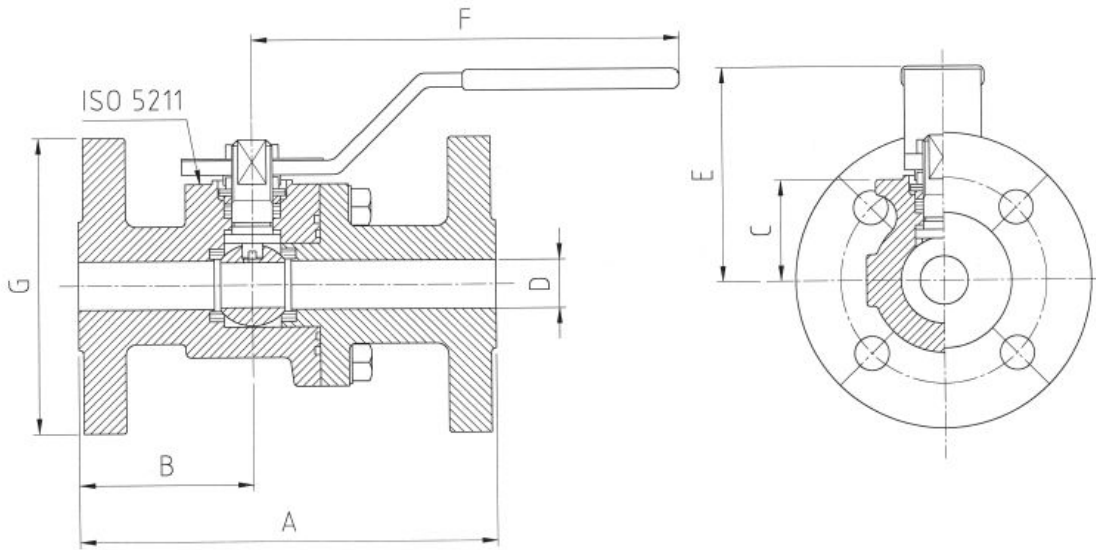
 <p>AD-WD</p>	 <p>6D-0233</p>	 <p>Lloyd's Register TYPE APPROVED</p>
--	--	---



FLANGED PN 16 - 25 - 40
Face to face according to EN 558-1 Basic Series 14
on request according to EN 558-1 Basic Series 1

FLANGED ASME 150
Face to face according to ASME B16.10
Flanged according to ASME B16.5

FLANGED ASME 300
Face to face according to ASME B16.10
Flanged according to ASME B16.5



PN 16-25-40 SERIE 14 FULL BORE									
VALVE DN	DIMENSIONS mm							ISO 5211	WEIGHT KG
	A	B	C	D	E	F	G		
15	115	49	27	15	70	152	95	F03	1,4
20	120	50	33,5	20	80	193	105	F04	3,2
25	125	53	38	25	92	193	115	F04	4,5
32	130	56,5	43,5	32	100	225	140	F05	6,2
40	140	58,5	47,5	40	113	225	150	F05	7,5
50	150	63	58,5	50	118	225	165	F05	10,5
65	170	72,5	70	65	135	360	185	F07	15
80	180	77	87,5	80	150	420	200	F07	20
100	300*	90	110	100	190	420	235	F07	45
150**	350*	170	170	150	263	700	300	F10	65

* Face to Face according to EN-558-1 SERIE 15

PN 16-25-40 SERIE 15 REDUCED BORE									
VALVE DN	DIMENSIONS mm							ISO 5211	WEIGHT KG
	A	B	C	D	E	F	G		
150	350	105	110	100	190	420	300	F07	57
200**	400	115	170	150	263	700	375	F10	76

** Available only for class PN 16-25

ASME/ANSI 150 FULL BORE										
VALVE SIZE	DIMENSIONS mm/inch							ISO 5211	WEIGHT	
	A	B	C	D	E	F	G		KG	LBS
DN 15	108	45,5	27	15	70	152	89,5	F03	1,3	2,9
inch 1/2"	4.1/4"	1.3/4"	1.1/8"	0.5"	2.3/4"	6"	3.1/2"			
DN 20	117,5	50	33,5	20	80	193	98,5	F04	3	6,7
inch 3/4"	4.5/8"	2"	1.1/4"	0.8"	3.1/8"	7.1/2"	3.7/8"			
DN 25	127	53	38	25	92	193	108	F04	4,5	10
inch 1"	5"	2.1/8"	1.1/2"	1"	3.5/8"	7.1/2"	4.1/4"			
DN 32	140	56,5	43,5	32	100	225	117,5	F05	6	13,3
inch 1.1/4"	5.1/2"	2.1/4"	1.3/4"	1.25"	4"	8.7/8"	4.5/8"			
DN 40	165	58,5	47,5	40	113	225	127	F05	7,5	16,7
inch 1.1/2"	6.1/2"	2.3/8"	1.7/8"	1.6"	4.1/2"	8.7/8"	5"			
DN 50	178	63	58,5	50	118	225	152,5	F05	10,5	23,3
inch 2"	7"	2.1/2"	2.1/4"	1.06"	4.5/8"	8.7/8"	6"			
DN 65	190,5	72,5	70	65	135	360	178	F07	15	33,3
inch 2.1/2"	7.1/2"	2.7/8"	2.3/4"	2.56"	5.3/8"	14.1/8"	7"			
DN 80	203	77	87,5	80	150	420	190,5	F07	20	44,4
inch 3"	8"	3"	3.1/2"	3.15"	5.7/8"	16.9/16"	7.1/2"			
DN 100	228,5	90	110	100	190	420	228,5	F07	50	111
inch 4"	9"	3.9/16"	4.5/16"	3.94"	7.1/2"	16.9/16"	9"			
DN 150	394	170	151	150	263	700	279,5	F10	80	177,6
inch 6"	15.1/2"	6.11/16"	5.15/16"	5.90"	10.3/8"	27.9/16"	11"			

PN 16-25-40 SERIE 1 FULL BORE									
VALVE DN	DIMENSIONS mm							ISO 5211	WEIGHT KG
	A	B	C	D	E	F	G		
15	130	49	27	15	70	152	95	F03	1,5
20	150	50	33,5	20	80	193	105	F04	3,4
25	160	53	38	25	92	193	115	F04	4,9
32	180	56,5	43,5	32	100	225	140	F05	6,8
40	200	58,5	47,5	40	113	225	150	F05	8,5
50	230	63	58,5	50	118	225	165	F05	12
65	290	72,5	70	65	135	360	185	F07	18,5
80	310	77	87,5	80	180	420	200	F07	26
100	350	90	110	100	190	420	235	F07	54
150**	480	170	170	150	263	700	300	F10	76

PN 16-25-40 SERIE 1 REDUCED BORE									
VALVE DN	DIMENSIONS mm							ISO 5211	WEIGHT KG
	A	B	C	D	E	F	G		
150	480	240	110	100	190	420	300	F07	68
200**	600	300	170	150	263	700	375	F10	83

ASME/ANSI 150 REDUCED BORE										
VALVE SIZE	DIMENSIONS mm/inch							ISO 5211	WEIGHT	
	A	B	C	D	E	F	G		KG	LBS
DN 150	394	197	110	100	190	420	279,5	F07	60	133,2
inch 6"	15.1/2"	7.3/4"	4.5/16"	3.94"	7.1/2"	16.9/16"	11"			
DN 200	457	228,5	151	150	263	700	342,9	F10	95	210,9
inch 8"	18"	9"	5.15/16"	5.90"	10.3/8"	27.9/16"	13.1/2"			

ASME/ANSI 300 FULL BORE										
VALVE SIZE	DIMENSIONS mm/inch							ISO 5211	WEIGHT	
	A	B	C	D	E	F	G		KG	LBS
DN 100	305	90	110	100	190	420	254	F07	65	144,3
inch 4"	9"	3.9/16"	4.5/16"	3.94"	7.1/2"	16.9/16"	10"			

ASME/ANSI 300 REDUCED BORE										
VALVE SIZE	DIMENSIONS mm/inch							ISO 5211	WEIGHT	
	A	B	C	D	E	F	G		KG	LBS
DN 150	403	202	110	100	190	420	317,5	F07	83	184,3
inch 6"	15.1/2"	7.15/16"	4.5/16"	3.94"	7.1/2"	16.9/16"	12.1/2"			